

Efficient and robust analysis of complex scattering data under noise in microwave resonators

S. Probst,^{1,a)} F. B. Song,^{1,2} P. A. Bushev,³ A. V. Ustinov,^{1,4} and M. Weides^{1,5}

¹Physikalisches Institut, Karlsruhe Institute of Technology, D-76128 Karlsruhe, Germany

²The 10th Institute of Chinese Electronic Technology Corporation, Chengdu 610036, China

³Experimentalphysik, Universität des Saarlandes, D-66123 Saarbrücken, Germany

⁴Laboratory of Superconducting Metamaterials, National University of Science and Technology "MISIS,"

Moscow 119049, Russia

⁵Institut für Physik, Johannes Gutenberg-Universität Mainz, D-55099 Mainz, Germany

(Received 23 October 2014; accepted 30 January 2015; published online 17 February 2015)

Superconducting microwave resonators are reliable circuits widely used for detection and as test devices for material research. A reliable determination of their external and internal quality factors is crucial for many modern applications, which either require fast measurements or operate in the single photon regime with small signal to noise ratios. Here, we use the circle fit technique with diameter correction and provide a step by step guide for implementing an algorithm for robust fitting and calibration of complex resonator scattering data in the presence of noise. The speedup and robustness of the analysis are achieved by employing an algebraic rather than an iterative fit technique for the resonance circle. © 2015 AIP Publishing LLC. [<http://dx.doi.org/10.1063/1.4907935>]

I. INTRODUCTION

The evaluation of the scattering parameters of resonators is crucial for a wide range of research directions. Resonators made out of superconductors provide low internal loss and are used to detect and study physical systems down to the single photon regime. For instance, in circuit quantum electrodynamics,¹ resonators are used for dispersive readout or coupling to quantum objects such as qubits²⁻⁴ or spin systems.⁵⁻⁸ Thus, it is crucial to understand the physics behind these resonators and, moreover, to be able to precisely determine their characteristic quantities. Fitting methods for determining parameters of a resonator, such as its resonance frequency f_r , coupling strength Q_c , or internal quality factor Q_i , were studied in several publications before.⁹⁻¹⁴ However, the high-noise environment as frequently found in single or few photon scattering experiments imposes a considerable challenge. In this paper, we first summarize the resonator properties and the conventional fitting procedures. Next, we provide a step-by-step explanation of the circle fit method, and discuss how to subtract the microwave environment of the resonator (cable length, signal amplification, etc.). The robustness of this fitting method is illustrated by adding noise to the signal.

A resonator is characterized by its resonance frequency f_r and quality factor Q . The quality factor is defined by the ratio of the energy stored in the resonator to the average energy loss per cycle times 2π . There are usually different energy relaxation paths, which contribute to the quality factor. In general, internal and coupling losses are distinguished, which are described by the internal Q_i and coupling or external Q_c quality factors, respectively. The loaded or total quality factor can be obtained by adding up the reciprocal values of these two contributing quality factors^{11,15} $Q_l^{-1} = Q_i^{-1} + \text{Re}\{Q_c^{-1}\}$.

As one can see, the coupling quality factor can be a complex number, which will be addressed later. Resonators are usually measured either in reflection or transmission. In contrast to a reflection measurement, it is impossible to directly determine the internal losses of the resonator by probing the resonator's transmission due to the missing reference baseline. Therefore, the reflection measurement is much more appealing and can be improved to choosing a so called notch type geometry, where the resonator is coupled to a transmission line. Figure 1(a) shows such a geometry, which allows for frequency division multiplexed readout of multiple resonators.^{2,16-18} The chip is measured in transmission S_{21} and the resonance appears as a dip in the spectrum. Figure 1(b) illustrates the complex transmission through such a notch type resonator chip by plotting the amplitude and phase of the transmitted signal as a function of the probe frequency.

The shape of the resonance dip can be asymmetric and there is an ongoing discussion on whether impedance mismatches, in proximity, to the resonator are responsible¹¹ or reflections between the input and output ports.¹² Here, we follow the model by Khalil *et al.*¹¹ and use a complex $Q_c = |Q_c| \exp(-i\phi)$, which takes impedance mismatches into account quantified by ϕ . Q_c is a measure for the coupling to the external stimulus and readout circuit, but in most cases, the internal quality factor Q_i is of interest because it quantifies internal losses. Usually, these are caused by coupling to two level fluctuators, which occurs due to impurities in the superconductor or substrate.¹⁹⁻²² Another important application is hybrid systems, e.g., for quantum memory research. Here, the change of Q_i is a direct measure for the coupling between resonator and spin ensemble.^{8,23-25}

There are a lot of different methods for extracting the resonator parameters from measured data. Petersan *et al.* were the first to provide a quantitative comparison of the different methods⁹ at that time. A more recent method is presented by Deng *et al.*¹² Since vector network analyzers (VNAs)

^{a)}Electronic mail: sebastian.probst@kit.edu

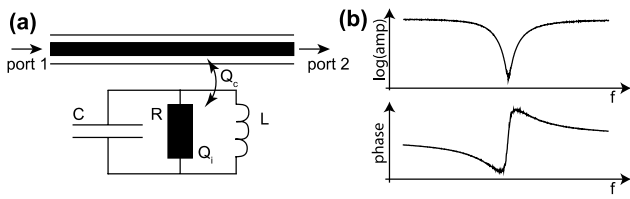


FIG. 1. (a) A LCR resonator coupled to the transmission line. (b) Simulated transmitted amplitude and phase signal as a function of frequency with noise.

can measure the full complex transmission, modern methods make use of the entire complex scattering data instead of solely the power or amplitude.^{11,12,26–28} Typically, this leads to better signal-to-noise ratios (SNRs) and a more accurate determination of the resonator parameters. A general model derives the complex S_{21} scattering coefficient of a notch type resonator as^{10,11}

$$S_{21}^{\text{notch}}(f) = \underbrace{ae^{i\alpha}e^{-2\pi if\tau}}_{\text{environment}} \underbrace{\left[1 - \frac{(Q_l/|Q_c|) e^{i\phi}}{1 + 2iQ_l(f/f_r - 1)}\right]}_{\text{ideal resonator}}. \quad (1)$$

The equation is split into two parts. The second part of Eq. (1) describes an ideal resonator where f denotes the probe frequency, f_r the resonance frequency, Q_l the loaded and $|Q_c|$ the absolute value of the coupling quality factor, and ϕ quantifies the impedance mismatch. As stated earlier, the term $\exp(i\phi)$ accounts for asymmetries of the resonator's transmission signal arising from different input and output impedances at the two ports of the resonator¹¹ or standing waves in the transmission line connected to the resonator.¹² Next, we will discuss the first term in Eq. (1) denoted *environment*. In this paper, it refers to all contributions to the signal coming from outside the sample. However, for an accurate broadband network analyzer measurement, a full calibration is required with a test kit installed at the position where the sample will be placed. For this purpose, the thru-reflect-line calibration is a commonly used method and we refer to Refs. 29 and 30 for details. However, a full calibration is time consuming (especially for cryogenic measurements) and not always necessary. The common situation in a research lab is that the network analyzer is calibrated at room temperature with the standard room temperature test kit. Thus, attaching the network analyzer to an experimental setup (with impedance matched microwave cables) introduces additional net attenuation or amplification due to cable losses and possible amplifiers present in the system. Furthermore, the length of the cables and the finite speed of light cause the phase to change proportionally to the applied frequency, which we will refer to as cable delay. Finally, the offset phase at the device under test depends on the cable length, too. Those contributions are accounted for by the environment term in Eq. (1) by adding three parameters to the model: An additional amplitude a , a phase shift α , and the electronic delay τ caused by the length of the cable and finite speed of light. Note that most microwave cables show a frequency dependent damping. However, this is mostly relevant for larger frequency ranges and can often be neglected in the narrow band of a superconducting microwave resonator.

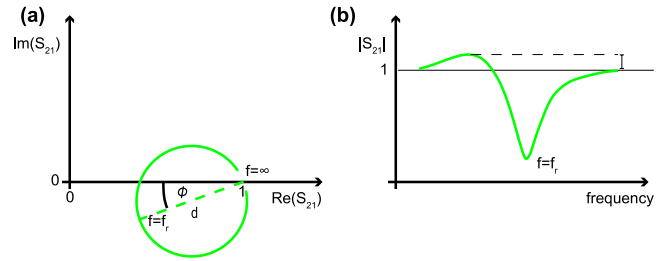


FIG. 2. (a) The resonance circle in its canonical position. The circle always intersects the real axis at 1 for $f \rightarrow \pm\infty$ independent of the other parameters, and the resonance $f = f_r$ is always located at the opposite side. A tilt by ϕ indicates an impedance mismatch and the diameter d is equal to $Q_l/|Q_c|$. (b) Sketch of the corresponding amplitude signal. The rotation of the circle by ϕ causes an asymmetry in the amplitude signal. Note, that the signal above 1 is just an artifact of the standard normalization, which sets the off-resonant point to 1, see (a).

Figure 2 shows a sketch of the ideal resonator transmission, where its imaginary part $\Im\{S_{21}\}$ is plotted versus its real part $\Re\{S_{21}\}$. The diameter of this so-called resonance circle corresponds to $d = Q_l/|Q_c|$. The circle intersects the real axis at unity, which corresponds to a probe frequency $f \rightarrow \pm\infty$, the so-called off-resonant point P . On the other side of this point, one finds the resonator at its resonance $f = f_r$. Impedance mismatches may cause a rotation of the circle by an angle ϕ , where the center of the rotation is on the real axis at unity, see Ref. 11 for further details.

The advantage of the notch type configuration becomes obvious by looking at a transmission measurement of a resonator. If one recalls the basic model of the lumped element LC circuit and its transmission function, one finds accordingly^{9,15}

$$S_{21}^{\text{trans}}(f) = ae^{i\alpha}e^{-2\pi if\tau} \left[\frac{(Q_l/|Q_c|) e^{i\phi}}{1 + 2iQ_l(f/f_r - 1)} \right]. \quad (2)$$

However, the problem here is that with pure S_{21} data, one cannot deduce the internal and coupling quality factors as well as the impedance mismatch. A quick way to see that is the following: The diameter of the ideal resonator's resonance circle is $Q_l/|Q_c|$, but in an uncalibrated measurement, it is masked by an additional arbitrary amplitude a resulting from the attenuation and gain in the measurement system, such that one measures $a \cdot Q_l/|Q_c|$. It is possible to extract the value of Q_l , e.g., by fitting the phase, but this procedure is not sufficient to solve for Q_c and, therefore, for Q_i . In other words, compared to the notch measurement, a reference baseline is missing. Since the off-resonant point $f \rightarrow \pm\infty$ is centered at the origin, one cannot distinguish between α and ϕ_0 , too. Different methods for fitting transmission resonators are discussed in Ref. 9. So, we will restrict ourselves to the discussion of notch type resonators, which have nowadays gained great importance, e.g., for the multiplexed readout of qubits and microwave kinetic inductance detectors (MKIDs).

II. ALGEBRAIC FIT OF THE RESONANCE CIRCLE

The core task is to efficiently fit a circle in order to determine the diameter $d = Q_l/|Q_c|$. An algebraic method is

preferable, because it allows to obtain the solution in a single run instead of iterative techniques, which suffer from the problem of choosing suitable initial parameters for reliable convergence. Here, we follow a paper by Chernov and Lesort, which compares several fitting methods for circles.³¹ The advantage of this algebraic fit is that it needs neither any start parameter nor any iterations, and thus provides a fast and reliable tool. Especially, in the presence of heavy noise, this method is by far superior because it always gives a result and the time to compute that result is independent of the signal-to-noise ratio. Usually, algebraic solutions outperform iterative approaches. A useful parametrization of a circle is the following:³¹

$$A(x^2 + y^2) + Bx + Cy + D = 0. \quad (3)$$

This over-parametrizes the problem and an additional constraint is needed,

$$B^2 + C^2 - 4AD = 1. \quad (4)$$

This parametrization is powerful because it is more general and has no singularities. For $A = 0$, one gets a line and $A > 0$ always gives a circle. For convenience, we define $z = (x^2 + y^2)$ and assume that our n data points (x_i, y_i) approximately form a circle: $Az_i + Bx_i + Cy_i + D \approx 0$. The function to be minimized reads as follows:³¹

$$\mathcal{F}(A, B, C, D) = \sum_{i=1}^n (Az_i + Bx_i + Cy_i + D)^2. \quad (5)$$

\mathcal{F} can be written in matrix form $\mathcal{F} = \mathbf{A}^T \mathbf{M} \mathbf{A}$ with $\mathbf{A} = (A, B, C, D)^T$. \mathbf{M} is the matrix of the moments, e.g., $M_{xx} = \sum_{i=1}^n x_i^2$, $M_{xy} = \sum_{i=1}^n x_i y_i$.

$$\mathbf{M} = \begin{pmatrix} M_{zz} & M_{xz} & M_{yz} & M_z \\ M_{xz} & M_{xx} & M_{xy} & M_x \\ M_{yz} & M_{xy} & M_{yy} & M_y \\ M_z & M_x & M_y & n \end{pmatrix}. \quad (6)$$

By analogy, the constraint from Eq. (4) reads $\mathbf{A}^T \mathbf{B} \mathbf{A} = 1$ with matrix \mathbf{B} defined as

$$\mathbf{B} = \begin{pmatrix} 0 & 0 & 0 & -2 \\ 0 & 1 & 0 & 0 \\ 0 & 0 & 1 & 0 \\ -2 & 0 & 0 & 0 \end{pmatrix}. \quad (7)$$

The minimization is done using a Lagrange multiplier η ,

$$\mathcal{F}^* = \mathbf{A}^T \mathbf{M} \mathbf{A} - \eta (\mathbf{A}^T \mathbf{B} \mathbf{A} - 1). \quad (8)$$

Differentiating with respect to \mathbf{A} gives $\mathbf{M} \mathbf{A} = \eta \mathbf{B} \mathbf{A}$. The eigenvalues can be obtained by solving the characteristic polynomial $\xi(\eta) = \det(\mathbf{M} - \eta \mathbf{B}) = 0$. There is only one eigenvalue η^* which minimizes \mathcal{F}^* . It has been shown that η^* is the smallest non-negative eigenvalue. Furthermore, the characteristic polynomial is decreasing and concave up between 0 and η^* , see Ref. 31. Thus, Newton's method with starting value 0 will certainly converge towards η^* .

For a practical implementation, the following steps are necessary:

1. calculate all moments M_{ij} ,

2. find η^* by solving the characteristic polynomial $\xi(\eta)$ using Newton's method with starting value $\eta = 0$,
3. find the corresponding eigenvector \mathbf{A}^* of η^* using standard numerical algorithms.

The radius and center coordinates of the circle can be extracted from \mathbf{A}^* by the following relations:

$$x_c = -\frac{B}{2A}, \quad (9)$$

$$y_c = -\frac{C}{2A}, \quad (10)$$

$$r_0 = \frac{1}{2|A|} \sqrt{B^2 + C^2 - 4AD} = \frac{1}{2|A|}. \quad (11)$$

The relation for the radius r_0 is simplified because the expression in the discriminant is identical to our constraint in Eq. (4), which was set to unity.

III. INFLUENCE OF THE ENVIRONMENT

S_{21} data from an experiment differ from the idealized resonator model. The details of the experimental environment influence the measured S_{21} data; cable damping changes the amplitude a , the finite length of the cable causes additional rotations of the phase while scanning the frequency (cable delay τ), and finally, the initial phase α might differ from 0. These influences can be accounted for by carefully calibrating the VNA's output signal. However, it is nontrivial to do this accurately, especially in the presence of an impedance mismatch¹¹ and/or standing waves in the transmission line coupled to the resonator.¹² Here, an alternative way is chosen and these quantities are fitted as well. Figure 3(a) shows the uncalibrated data in the complex plane. The elimination of the prefactors in Eq. (1) is done in two steps. First, a rough estimate of the cable delay is needed. The cable delay tilts the phase signal by a slope $2\pi\tau$ and in order to get a rough estimate, it is sufficient to fit a linear function to the phase signal. Without any cable delay, the resonance looks like a circle in the complex plane. The cable delay introduces a frequency dependent rotation of the phase centered at the origin and, therefore, twists the circle to a loop like curve. In the following, we perform a non-linear least square fit on this curve. The fit parameter is the cable delay and the error function to be minimized is the deviation from the ideal circular shape $\chi^2 = \sum_{i=1}^n \{r_0^2 - [(x_i - x_c)^2 + (y_i - y_c)^2]\}$. Here, r_0 and x_c and y_c are the radius and the center coordinates obtained by performing the algebraic circle fit to the data, respectively. We emphasize that this procedure is only possible due to the robustness of the algebraic fit.

After having determined the cable delay τ , the modified S_{21} data already look like a circle, but they still differ from the ideal case by an affine transformation, namely, $ae^{i\alpha}$, see Fig. 3(b). Note, that a accounts for additional attenuation/amplification present in the setup; however, it does neglect frequency dependent damping, e.g., of microwave cables. In most cases, the resonance is narrow and this effect is negligible.

In order to determine a and α , it is necessary to determine the off-resonant point P . This point $P = 1$ is an invariant

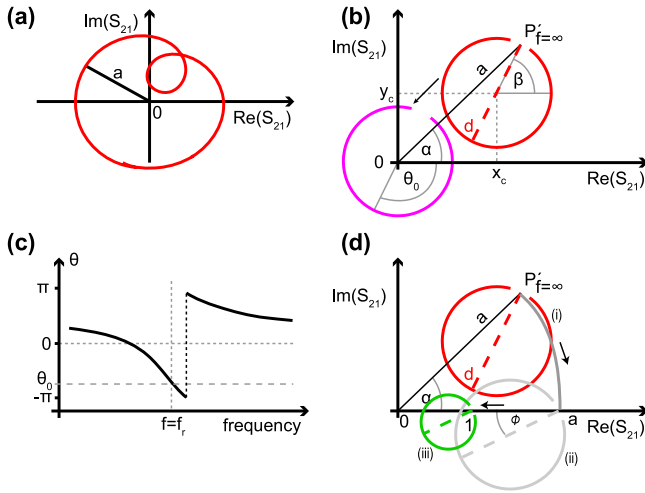


FIG. 3. (a) Uncalibrated transmission data of a notch resonator. The cable delay causes a circular distortion of the ideal resonance circle. The radius a of this distortion represents the system's attenuation/gain. The cable delay is removed by the procedure described in the text. (b) An algebraic fit determines the circle's diameter d and its center position (x_c, y_c) . In order to determine the remaining prefactors a and α , the circle has to be translated to the origin. (c) A phase fit of the translated circle determines θ_0 , which yields β . This gives, together with the center and diameter of the circle, the coordinates of the off-resonant point P' (see also (b)). (d) The final operation transforms the circle into its canonical position such that $P' \rightarrow 1$.

quantity of the resonator model. It is independent of the resonance frequency, the quality factor and the impedance mismatch. Its position in the complex plane P' is only altered by the prefactors a and α of the environment. Thus, knowing its position determines these two remaining quantities. In order to find that point, one needs to know the resonance frequency. This is done fitting a circle to the data and translating its center to the origin, see Fig. 3(b). Then, a phase vs. frequency fit is performed, shown in Fig. 3(c), which yields the resonance frequency, the total quality factor Q_t , and the offset phase θ_0 (see Ref. 10),

$$\theta(f) = \theta_0 + 2 \arctan \left(2Q_t \left[1 - \frac{f}{f_r} \right] \right). \quad (12)$$

From θ_0 and the center position of the circle, the complex position of the transformed off-resonant point P' is found via geometric relations,

$$\tilde{P} = x_c + r_0 \cos(\beta) + i [y_c + r_0 \sin(\beta)]. \quad (13)$$

Here, $\beta = (\theta_0 + \pi) \bmod \pi$ denotes the angular position of the off-resonant point P' of the translated circle, which is rotated by π from the resonance point, $\beta \in (-\pi, \pi)$. The absolute value of P' gives the amplitude scaling factor a and $\arg(\tilde{P})$ yields the phase offset α . Figure 3(d) displays the final transformation of the circle to its canonical position.

IV. IMPLEMENTATION

In a real experiment, one would use the described algorithm as follows. First, a high resolution scan of the resonator $S_{21}(f)$ is taken. This is usually done at high power and at low IF bandwidth such that the SNR is larger than 100. One should take a sufficient number of points evenly spaced around the

resonance and distributed over a frequency span of approximately four 3 dB bandwidths. Here, the 3 dB bandwidth is defined by the loaded quality factor and the resonance frequency $\Delta f_{3\text{dB}} = f_r/Q_t$. The automatic determination of the prefactors a , α , and τ is very accurate in this case. For the subsequent measurements, all measurement data are normalized by these prefactors before performing the actual circle fit method. This normalization rotates the resonance circle in the canonical position, see Figs. 3(a)–3(d), such that from now on only 4 fitting parameters remain to be determined. This allows for maintaining a good accuracy of the fit even at low SNRs, which reduces the measurement time. Furthermore, as shown below, much less points are needed in the subsequent fits, which speed up the measurement further.

The calibrated data are first fitted to a circle of the $\text{Im}\{S_{21}\}$ vs. $\text{Re}\{S_{21}\}$ data determining the center (x_c, y_c) and radius r_0 . The impedance mismatch is directly determined by $\phi_0 = -\arcsin(y_c/r_0)$. Then, the circle is translated to the origin and a phase vs. frequency fit is performed, see Eq. (12). Here, the initial value for $\theta_0 = \phi_0 + \pi \bmod \pi$ is calculated. This gives Q_t and f_r . Since the circle is already in its canonical form, we can calculate¹¹ the complex coupling quality factor $Q_c = Q_t/(2r_0 \exp(-i\phi_0))$. The internal quality factor is given by equation $Q_i^{-1} = Q_t^{-1} - \text{Re}\{Q_c^{-1}\}$. The errors of the λ individual fitting parameters ξ_i are conveniently calculated by first numerically determining the Jacobian matrix $J = -\partial \chi_i / \partial \xi_j$ with $\chi_i = |y_i - S_{21}(f_i, \xi)|$. Then, the covariance matrix is given by $\sigma^2 = \chi^2 / (N - \lambda) (J^T J)^{-1}$ and the errors are the square roots of its diagonal elements. An implementation of the algorithm is available on our website.³²

V. TEST OF THE ALGORITHM

In this section, we investigate the fit's behavior in the presence of different noise levels. For this purpose, we

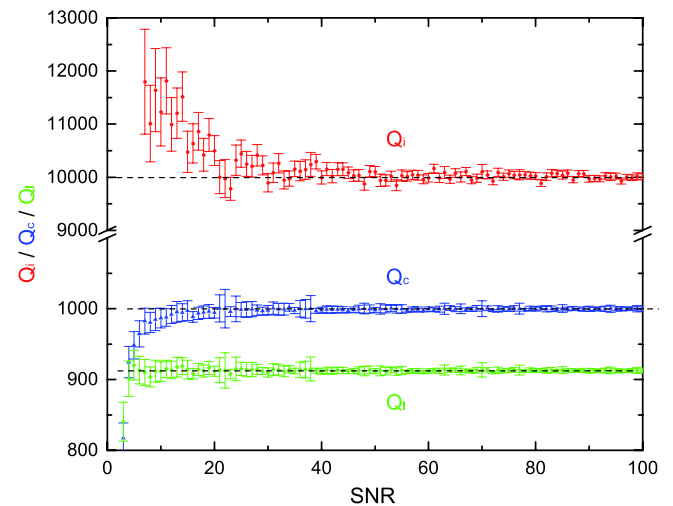


FIG. 4. Internal Q_i , coupling Q_c , and total quality factor Q_t as a function of the signal to noise ratio. The internal quality factor is already diameter corrected. The error bars denote the statistical error, which is estimated by the algorithm, and the dashed lines indicated the respective true values. Above SNR = 40, the fitted values are very stable, and down to SNR = 20, the fit of Q_i remains robust.

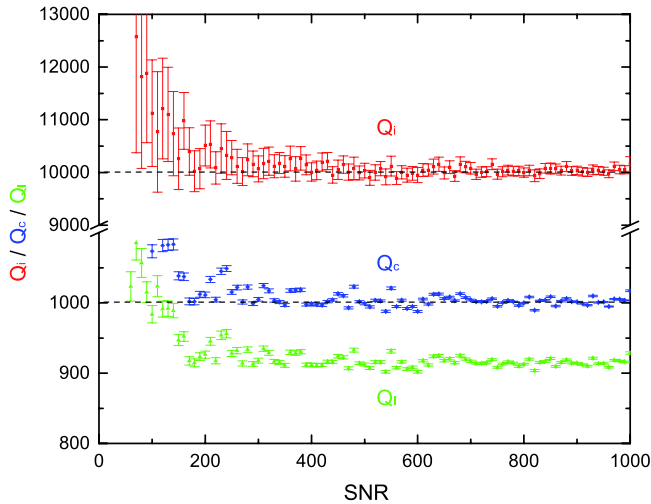


FIG. 5. Internal, coupling, and total quality factors as a function of the signal to noise ratio. The dashed lines indicate the true Q_i and Q_c values. Here, the raw data contain additionally an arbitrary cable delay, start phase, and amplitude, which need to be automatically corrected for in advance. Thus, this complex procedure works only for high quality data with SNR larger than 300, for the given parameters.

generate artificial S_{21} data and add a controlled amount of noise. This is done in such a way that the radius r_0 of each point on the resonance circle is altered by a Gaussian distributed random number. The distribution has its mean value at r_0 and a width of $\sigma = r_0/\text{SNR}$, where SNR denotes the desired signal to noise ratio of the generated data. The signal to noise ratio is defined as follows:⁹

$$\text{SNR} = \frac{r_0}{\sigma_r} = \frac{r_0}{\sqrt{\frac{1}{N-1} \sum_{i=1}^N (r_i - r_0)^2}}. \quad (14)$$

Here, r_0 denotes the radius of the circle, N is the number of data points, and $r_i = \sqrt{(x_i - x_c)^2 + (y_i - y_c)^2}$ with (x_c, y_c) denoting the center of the circle. Only in the case of artificially generated data, the SNR can be computed exactly. For real data, the center and radius have to be fitted first and are subject to errors as well. However, in most cases, the obtained values should be accurate enough to determine the SNR.

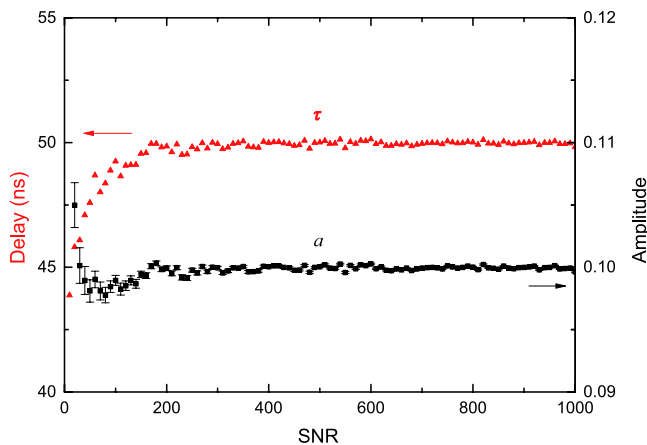


FIG. 6. Fitted cable delay and amplitude as a function the SNR.

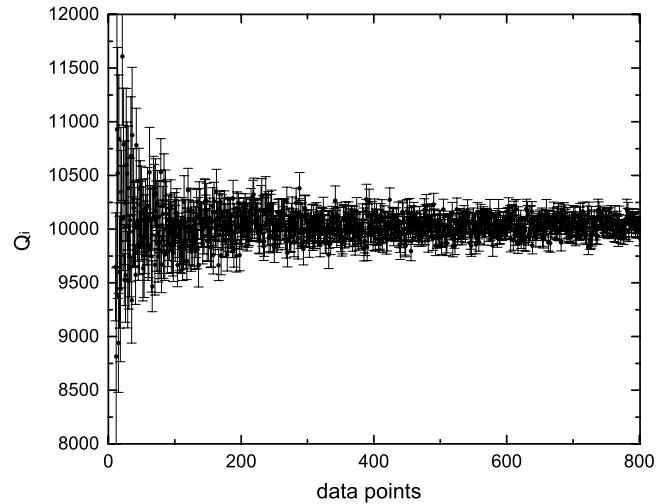


FIG. 7. Internal quality factor as a function of the number of recorded points. Above 200 points, this fit appears to be only limited by the SNR, which is set to 65 in this case.

The chosen parameters of the generated data are typical for superconducting resonators: $Q_c = 10^3$, $Q_i = 10^4$, $f_r = 5$ GHz, $\phi = 0.03\pi$. For the test of the calibration algorithm, we set the prefactors as follows: $\tau = 50$ ns, $a = 0.1$, and $\alpha = 0.4\pi$. First, a properly calibrated measurement is assumed, i.e., we normalize the simulated data using the given prefactors such that the resonator is in its canonical position in the complex plane. Therefore, only the parameters $|Q_c|$, Q_i , f_r , and ϕ are fitted (see also Eq. (1)). Figure 4 shows the fit results as a function of the signal to noise ratio from 1 to 100 and interestingly, even in the low SNR regime, the algorithm performs well.

Next, Figs. 5 and 6 show the performance of the calibration algorithm as a function of the SNR from 10 to 1000. Figure 6 shows the results of the automatic cable delay and amplitude calibration procedure. As expected, the calibration works only for large SNR values. Below a SNR of 200, the calibration becomes inaccurate and, therefore, the determination of the resonator's parameters is not reliable anymore. But this is not an obstacle because a calibration is typically run only once at large SNR for a given experiment.

Finally, the performance in the limit of very few points is tested. For many experimental settings, it may be convenient to take only few data points but with a larger SNR. Figure 7 shows the performance of the calibrated algorithm as a function of the number of points from 11 to 801 for a fixed SNR of 65. One can see that at least 200 or more points are necessary for a reliable determination of the internal quality factor at the given SNR level.

VI. CONCLUSION

The presented method offers a fast and accurate analysis of noisy complex scattering data of microwave resonators. At sufficient signal-to-noise ratio, the method relies on complex VNA data without any need of calibration. As a result, all six parameters of the generalized resonator problem are determined automatically. These are internal and loaded

quality factors, the resonance frequency, and an impedance mismatch parameter. In addition, the contributions of the measurement circuit as well as the cable delay are accounted for, given by an arbitrary amplitude and phase factors. In the presence of strong noise, the calibrated resonator fit algorithm proves to be very robust even at $\text{SNR} < 20$. Finally, the presented fit algorithm outperforms existing methods in terms of robustness and speed, because it uses a non-iterative fit for the determination of the circle parameters, i.e., the circle fit converges immediately without the need of providing start values. The method allows to analyze calibrated resonator data in real time, which is required for a large range of applications of superconducting microwave resonators.

ACKNOWLEDGMENTS

We thank J. Braumüller for the critical reading of the manuscript, and we gratefully acknowledge valuable discussions with D. Pappas, M. Vissers, and J. Gao. S.P. acknowledges financial support by the LGF of Baden-Württemberg. This work was supported in part by the DFG, the BMBF program “Quantum communications” through the project QUIMP, and the Ministry for Education and Science of the Russian Federation under Contract No. 11.G34.31.0062 and in the framework of the Increase Competitiveness Program of the National University of Science and Technology MISIS under Contract No. K2-2014-025.

- ¹A. Blais, R. S. Huang, A. Wallraff, S. M. Girvin, and R. J. Schoelkopf, *Phys. Rev. A* **69**, 062320 (2004).
- ²M. Jerger, S. Poletto, P. Macha, U. Hübner, E. Il'ichev, and A. V. Ustinov, *Appl. Phys. Lett.* **101**, 042604 (2012).
- ³M. P. Weides, J. S. Kline, M. R. Vissers, M. O. Sandberg, D. S. Wisbey, B. R. Johnson, T. A. Ohki, and D. P. Pappas, *Appl. Phys. Lett.* **99**, 262502 (2011).
- ⁴J. Braumüller, J. Cramer, S. Schlör, H. Rotzinger, L. Radtke, A. Lukashenko, P. Yang, S. T. Skacel, S. Probst, M. Marthaler, L. Guo, A. V. Ustinov, and M. Weides, “Multi-photon dressing of an anharmonic superconducting many-level quantum circuit,” (2014), e-print [arXiv:1410.3383](https://arxiv.org/abs/1410.3383).
- ⁵S. Probst, H. Rotzinger, S. Wünsch, P. Jung, M. Jerger, M. Siegel, A. V. Ustinov, and P. A. Bushev, *Phys. Rev. Lett.* **110**, 157001 (2013).
- ⁶Y. Kubo, F. R. Ong, P. Bertet, D. Vion, V. Jacques, D. Zheng, A. Dréau, J.-F. Roch, A. Auffèves, F. Jelezko, J. Wrachtrup, M. F. Barthe, P. Bergonzo, and D. Esteve, *Phys. Rev. Lett.* **105**, 140502 (2010).
- ⁷Y. Kubo, C. Grezes, A. Dewes, T. Umeda, J. Isoya, H. Sumiya, N. Morishita, H. Abe, S. Onoda, T. Ohshima, V. Jacques, A. Dréau, J.-F. Roch, I. Diniz, A. Auffèves, D. Vion, D. Esteve, and P. Bertet, *Phys. Rev. Lett.* **107**, 220501 (2011).

- ⁸D. I. Schuster, A. P. Sears, E. Ginossar, L. DiCarlo, L. Frunzio, J. J. L. Morton, H. Wu, G. A. D. Briggs, B. B. Buckley, D. D. Awschalom, and R. J. Schoelkopf, *Phys. Rev. Lett.* **105**, 140501 (2010).
- ⁹P. J. Petersan and S. M. Anlage, *J. Appl. Phys.* **84**, 3392 (1998).
- ¹⁰J. Gao, “The physics of superconducting microwave resonators,” Ph.D. thesis (California Institute of Technology, 2008).
- ¹¹M. S. Khalil, M. J. A. Stoutimore, F. C. Wellstood, and K. D. Osborn, *J. Appl. Phys.* **111**, 054510 (2012).
- ¹²C. Deng, M. Otto, and A. Lupascu, *J. Appl. Phys.* **114**, 054504 (2013).
- ¹³A. Megrant, C. Neill, R. Barends, B. Chiaro, Y. Chen, L. Feigl, J. Kelly, E. Lucero, M. Mariantoni, P. J. J. O'Malley, D. Sank, A. Vainsencher, J. Wenner, T. C. White, Y. Yin, J. Zhao, C. J. Palmstrom, J. M. Martinis, and A. N. Cleland, *Appl. Phys. Lett.* **100**, 113510 (2012).
- ¹⁴M. Göppel, A. Fragner, M. Baur, R. Bianchetti, S. Filipp, J. M. Fink, P. J. Leek, G. Puebla, L. Steffen, and A. Wallraff, *J. Appl. Phys.* **104**, 113904 (2008).
- ¹⁵D. M. Pozar, *Microwave Engineering*, 4th ed. (Wiley, 2011).
- ¹⁶S. Wuensch, G. Hammer, T. Kappler, F. Geupert, and M. Siegel, *IEEE Trans. Appl. Supercond.* **21**, 752 (2011).
- ¹⁷Y. Chen, D. Sank, P. O'Malley, T. White, R. Barends, B. Chiaro, J. Kelly, E. Lucero, M. Mariantoni, A. Megrant, C. Neill, A. Vainsencher, J. Wenner, Y. Yin, A. N. Cleland, and J. M. Martinis, *Appl. Phys. Lett.* **101**, 182601 (2012).
- ¹⁸M. R. Vissers, M. P. Weides, J. S. Kline, M. Sandberg, and D. P. Pappas, *Appl. Phys. Lett.* **101**, 022601 (2012).
- ¹⁹J. Gao, J. Zmuidzinas, B. A. Mazin, H. G. LeDuc, and P. K. Day, *Appl. Phys. Lett.* **90**, 102507 (2007).
- ²⁰J. Gao, M. Daal, A. Vayonakis, S. Kumar, J. Zmuidzinas, B. Sadoulet, B. A. Mazin, P. K. Day, and H. G. Leduc, *Appl. Phys. Lett.* **92**, 152505 (2008).
- ²¹J. Gao, M. Daal, J. M. Martinis, A. Vayonakis, J. Zmuidzinas, B. Sadoulet, B. A. Mazin, P. K. Day, and H. G. Leduc, *Appl. Phys. Lett.* **92**, 212504 (2008).
- ²²H. Wang, M. Hofheinz, J. Wenner, M. Ansmann, R. C. Bialczak, M. Lenander, E. Lucero, M. Neeley, A. D. O'Connell, D. Sank, M. Weides, A. N. Cleland, and J. M. Martinis, *Appl. Phys. Lett.* **95**, 233508 (2009).
- ²³P. Bushev, A. K. Feofanov, H. Rotzinger, I. Protopopov, J. H. Cole, C. M. Wilson, G. Fischer, A. Lukashenko, and A. V. Ustinov, *Phys. Rev. B* **84**, 060501(R) (2011).
- ²⁴S. Probst, N. Kukharchyk, H. Rotzinger, A. Tkalčec, S. Wünsch, A. D. Wieck, M. Siegel, A. V. Ustinov, and P. A. Bushev, *Appl. Phys. Lett.* **105**, 162404 (2014).
- ²⁵S. Probst, A. Tkalčec, H. Rotzinger, D. Rieger, J.-M. Le Floch, M. Goryachev, M. E. Tobar, A. V. Ustinov, and P. A. Bushev, *Phys. Rev. B* **90**, 100404 (2014).
- ²⁶M. Sanchez, E. Martin, and J. Zamarro, *IEEE Proc.-H: Microwaves, Antennas Propag.* **136**, 147 (1989).
- ²⁷Z. Ma, “RF properties of high temperature superconducting materials,” Ph.D. thesis (Stanford University, 1995).
- ²⁸H. J. Snortland, “Nonlinear surface impedance in superconductors,” Ph.D. thesis (Stanford University, 1997).
- ²⁹R. B. Marks, *IEEE Trans. Microwave Theory Tech.* **39**, 1205 (1991).
- ³⁰J.-H. Yeh and S. M. Anlage, *Rev. Sci. Instrum.* **84**, 034706 (2013).
- ³¹N. Chernov and C. Lesort, *J. Math. Imaging Vision* **23**, 239 (2005).
- ³²See http://www.phy.kit.edu/ustinov_downloads.php to download a Python implementation of the fitting algorithm.